

# The Quiz League of London

# Team Times

#31, 2008-12

## 2008-2009 Season update

With nearly half the season gone, Nomads top the table. Every team has been beaten at least once, and every team has at least 1 point with no teams level.

Pos	Division 1	P	W	D	L	Avg	B	Pts
1	<b>Nomads</b>	7	6	0	1	55.57	6	<b>30</b>
2	<b>Broken Hearts</b>	7	6	0	1	50.29	5	<b>29</b>
3	<b>Atletico</b>	7	4	0	3	49.71	8	<b>24</b>
4	<b>Allsorts</b>	7	4	0	3	51.14	3	<b>19</b>
5	<b>Waterloo Sunset</b>	7	3	0	4	45.57	4	<b>16</b>
6	<b>Old Itonians</b>	7	3	0	4	44.57	3	<b>15</b>
7	<b>Barb</b>	8	3	0	5	42.88	2	<b>14</b>
8	<b>Pineapple</b>	7	2	0	5	42.14	4	<b>12</b>
9	<b>Gray Monks</b>	7	1	0	6	39.57	0	<b>4</b>

Pos	Division 2	P	W	D	L	Avg	B	Pts
1	<b>Pericardium</b>	7	6	0	1	54.00	4	<b>28</b>
2	<b>Belly</b>	7	6	0	1	43.86	2	<b>26</b>
3	<b>Rosslyn Park</b>	7	5	0	2	44.29	4	<b>24</b>
4	<b>Ovalytes</b>	7	5	0	2	41.14	1	<b>21</b>
5	<b>Telstars</b>	7	4	0	3	41.57	2	<b>18</b>
6	<b>Accrington Cylindricals</b>	8	3	0	5	37.75	3	<b>15</b>
7	<b>Mealy Bugs</b>	7	3	0	4	37.71	0	<b>12</b>
8	<b>London Scottish</b>	7	0	0	7	34.57	3	<b>3</b>
9	<b>Wharfside</b>	7	0	0	7	23.71	1	<b>1</b>

## Statistics

Numerous team and player numbers have been calculated for your viewing pleasure. Some examples include:

**Contribution** (% individual points scored by a player for their team when playing)

Pos	Player	Team	C%
1	<b>Colin Kidd</b>	Wharfside	70.59
2	<b>Hugh Brady</b>	Mealy Bugs	44.29
3	<b>Mick Lancaster</b>	Belly	40.91
4	<b>John McDonnell</b>	Accrington Cylindricals	38.01
5	<b>David Stainer</b>	Pericardium	37.69
6	<b>Fred Filby</b>	Old Itonians	36.14
7	<b>John O'Connor</b>	Accrington Cylindricals	34.88
8	<b>Martin Smith</b>	Pineapple	34.58
9	<b>Gavin Fuller</b>	Allsorts	34.36
10	<b>Quentin Holt</b>	Waterloo Sunset	34.15
11	<b>Shrirang Raddi</b>	Wharfside	33.77
12	<b>Peter Ediss</b>	Gray Monks	33.69
13	<b>Roger Barnes</b>	Belly	33.58
14	<b>Donald Yule</b>	Barb	33.53
15	<b>Michael Dawson</b>	Mealy Bugs	33.33
16	<b>Kevin Ashman</b>	Allsorts	33.07

**Winning Margin Average** (average gap, only when a team wins)

Pos	Team	Div	WMA
1	<b>Pericardium</b>	2	20.43
2	<b>Nomads</b>	1	14.67
3=	<b>Mealy Bugs</b>	2	13.00
3=	<b>Waterloo Sunset</b>	1	13.00
5	<b>Old Itonians</b>	1	12.75

Tony Allen (Ovalytes) is the first player to have sat in all 4 seats in league matches this season. Wharfside have fielded the most different players (9). Nomads are the only team never to have gone first in a match. Jesse Honey (Broken Hearts) is the only player to have played 4 or more games and to average more than 6 2s per match. Three other players average exactly 6. Let us know what statistics you would like to see. Information is only as good as the source data, so please submit the score sheet promptly and hang on to it!

## President's Cup 2008-2009

The competition reached the half-way stage on Sunday, too late for publication here. After 4 games, London were setting the pace with Cambridge and the Masterminders making it tough for Sussex to retain their title.

Pos	Team	P	W	D	L	2s	Pts
1	<b>London</b>	4	4	0	0	50	<b>8</b>
2	<b>Cambridge</b>	4	3	0	1	40	<b>6</b>
3	<b>Mastermind Club</b>	4	3	0	1	35	<b>6</b>
4	<b>Sussex</b>	4	2	0	2	38	<b>4</b>
5	<b>Oxford</b>	4	0	0	4	31	<b>0</b>
6	<b>Beds &amp; Herts</b>	4	0	0	4	23	<b>0</b>

## Only Connect

Several all QLL teams have appeared on BBC4's quiz and puzzle show



Only Connect. Cricket Supporters (pictured): Mick Lancaster (Belly), Ray Eaton (Nomads), Stuart Solomons (Atletico), Crossworders: Mark Grant (Broken Hearts), David Stainer (Pericardium), Ian Bayley (Broken Hearts) and Bookkeepers: Quentin Holt, Ray Ward, Ann Kelly (all Waterloo Sunset). The latter stages of the competition are on BBC4 at 20:30 after University Challenge finishes.

## Are You An Egghead?

Six current QLLers have appeared on BBC2's search for an additional Egghead to join the existing 5. Jenny Ryan (Pericardium), Ian Bayley (Broken Hearts), Shanker Menon (Allsorts), and Olav Bjortomt (Broken Hearts) all won their opening matches but lost in Round 2, Kathryn Johnson (Pericardium) and Dom Tait (pictured) (Pineapple) went out in the first round. The final stages of the competition are available online at: [www.bbc.co.uk/iplayer](http://www.bbc.co.uk/iplayer) The new Egghead takes their place on BBC2 at 18:00 on Monday, 8th December.



## LSE University Challenge team training

The league played the London School of Economics' University Challenge team in a some practice matches prior to their recording of the conclusion to the series. LSE beat Bath in the first round 220-85 and Selwyn College, Cambridge 270-135 in round 2. Watch BBC2 at 20:00 on Mondays to see how they progress.



## Quizzes published

Thanks to teams providing friendly quizzes, we are now publishing these on the web site. We hope this will increase traffic, help other quiz leagues and encourage participation in the QLL. If you spot any errors or have quizzes to add, please let us know.

## Brain of Britain

Paul Steeples (Nomads) and Peter Ediss (Gray Monks) both advanced from the same heat on Brain of Britain. The semi-finals and final are on BBC Radio 4 in the new year. 13:30 on Mondays, repeated 23:00 on Saturdays.

## Life after Mastermind

David Clark, 2007 Mastermind winner writes an extensive blog covering various television quizzes and his experience of playing in and setting pub quizzes. Well worth a read: [lifeaftermastermind.blogspot.com](http://lifeaftermastermind.blogspot.com)



## Quiz times

**Going for Gold**, Weekdays, 12:45, five  
**Countdown**, Weekdays, 15:25, Channel 4  
**Weakest Link**, Weekdays, 17:15, BBC1  
**Eggheads**, Weekdays, 18:00, BBC2  
**Brain of Britain**, Monday, 13:30, BBC Radio 4  
**Mastermind**, Friday, 20:00, repeat Monday, 19:30, BBC2  
**University Challenge**, Monday, 20:00, BBC2  
**Only Connect**, Monday, 20:30, BBC4  
**The News Quiz**, Friday, 18:30, BBC Radio 4  
**A Question of Sport**, Friday, 19:30, BBC1

**Pop Quiz** Name these acts, all have been #1 in the charts in 2008.



1.



2.



3.



4.



5.



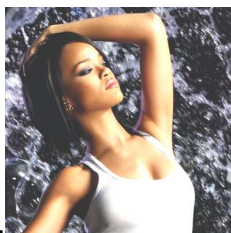
6.



7.



8.



9.



10.

## Quiz in the News

26 November University Challenge punk James Archer from Rochester, Kent was spoken to by police after he appeared for King's College, Cambridge wearing an RAF-style jacket and a mohican haircut like Adrian Edmondson's character Vyvyan from The Young Ones. Viewers complained that he was breaking the law by imitating an RAF officer.



25 November Krypton Factor Ben Shephard has been confirmed as the host of The Krypton Factor's revival. As ITV1's first primetime Advertiser Funded Programme, it will be sponsored by the software company Sage.



21 November Countdown The new host of Countdown has at last been named. Sky Sports Soccer Saturday presenter Jeff Stelling will take over from Des O'Connor in January. Alexander Armstrong, reported as having verbally accepted, pulled out at the last minute after being offered the role.



Carol Vorderman's replacement has been named as Rachel Riley, a 22-year old Oriel College Oxford graduate with a masters degree in maths.



9 October The Colour of Money Chris Tarrant is to host a primetime series on ITV1 based on the Bong Game from his Capital Radio show.



3 October BBC One poaches QI QI is to move to BBC One following five series on BBC Two. The new series is to air early in 2009.



## Contestant Calls

Many opportunities exist to appear on television and radio quiz and game shows:

**Going for Gold:** [gfg@fremantlemedia.com](mailto:gfg@fremantlemedia.com)  
Deadline: 19 December 2008

**Mastermind:** [www.bbc.co.uk/mastermind](http://www.bbc.co.uk/mastermind)

**Weakest Link:** [weakestlink@bbc.co.uk](mailto:weakestlink@bbc.co.uk)

**Eggheads:** [eggheads@12yard.com](mailto:eggheads@12yard.com) (teams of 6)

**Brain of Britain:** [paul.bajoria@bbc.co.uk](mailto:paul.bajoria@bbc.co.uk)

**University Challenge:** [universitychallenge@bbc.co.uk](mailto:universitychallenge@bbc.co.uk)

For more calls and information: [www.ukgameshows.com](http://www.ukgameshows.com)

## Submissions

Submissions / text / ideas / quizzes for inclusion in future issues are welcome. To declare interests, I am involved with the running/editing of [UKGameshows.com](http://UKGameshows.com) (source for news and contestant calls). Special thanks to Phil Evison of Rosslyn Park for providing captured images.

Will Jones

Team Times is the newsletter of the Quiz League of London (QLL)  
Formerly the South London Quiz League.

Founded 1990, an independent, non-profit-making association, owned and run by its member teams.

Web site: [www.QLL.org.uk](http://www.QLL.org.uk)

Answers in the Quizzes section on [www.QLL.org.uk](http://www.QLL.org.uk)